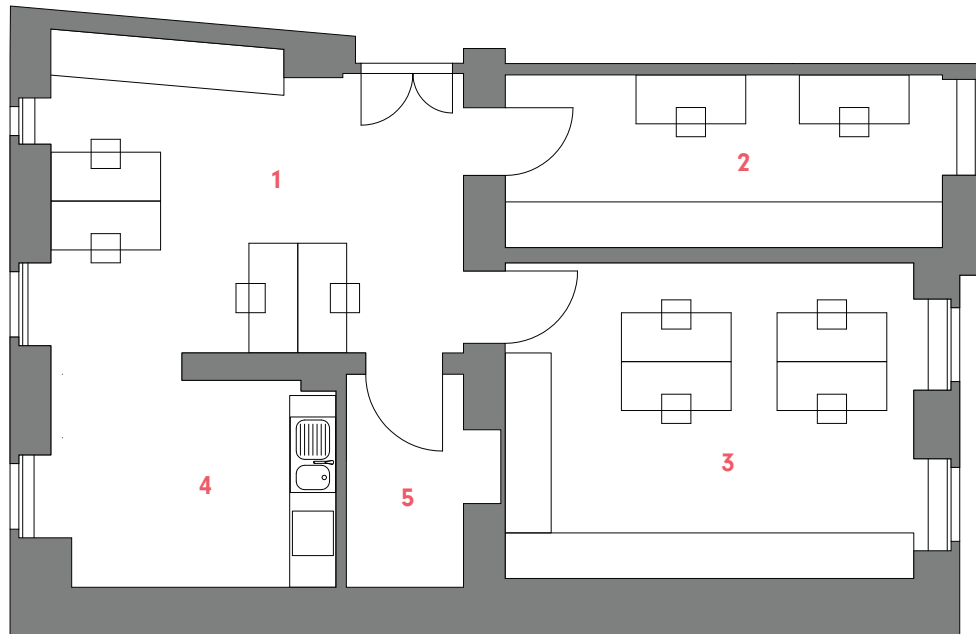
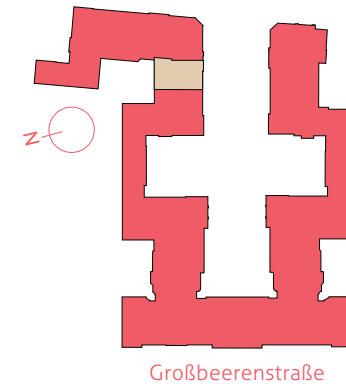


**GEW 65**

**3-Zimmer-Gewerbe  
im EG**

3-Room-Business, Ground Floor  
Großbeerenstr. 56D, Aufgang Dorothea



1 Gewerbe / Business 1.....	21,86 m <sup>2</sup>
2 Gewerbe / Business 2.....	13,12 m <sup>2</sup>
3 Gewerbe / Business 3.....	22,55 m <sup>2</sup>
4 Küche / Kitchen.....	10,31 m <sup>2</sup>
5 WC / WC.....	4,84 m <sup>2</sup>
<b>GESAMTFLÄCHE.....</b>	<b>72,68 m<sup>2</sup></b>
Total living space	