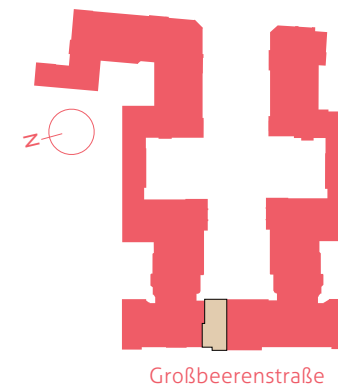
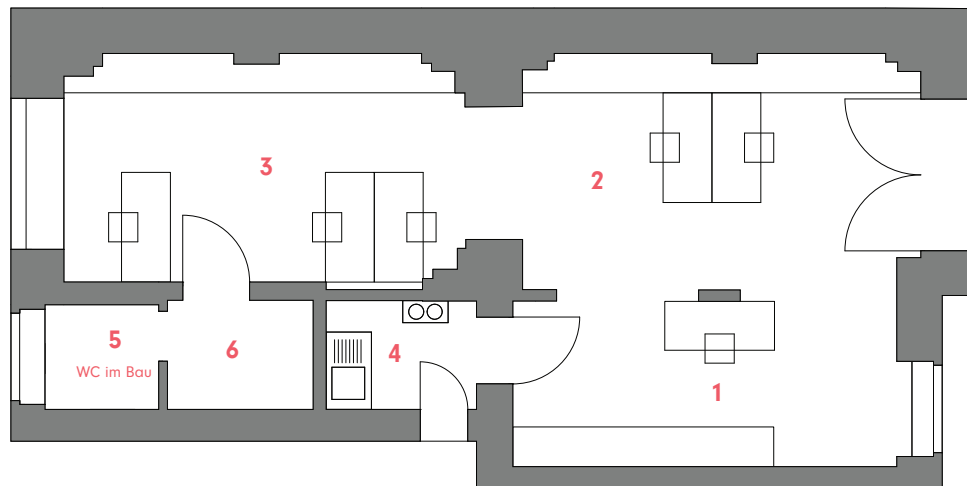


**GEW 115**  
**3-Zimmer-Gewerbe**  
**im EG**

3-Room-Business, Ground Floor  
Großbeerenstr. 57, Aufgang Victoria



1	Gewerbe / Business 1.....	11,39 m <sup>2</sup>
2	Gewerbe / Business 2.....	16,10 m <sup>2</sup>
3	Gewerbe / Business 3.....	17,02 m <sup>2</sup>
4	Küche / Kitchen.....	2,87 m <sup>2</sup>
5	WC / WC.....	2,08 m <sup>2</sup>
6	Vorraum / Entrance room.....	2,79 m <sup>2</sup>
<b>GESAMTFLÄCHE.....</b>		<b>52,25 m<sup>2</sup></b>
Total living space		

