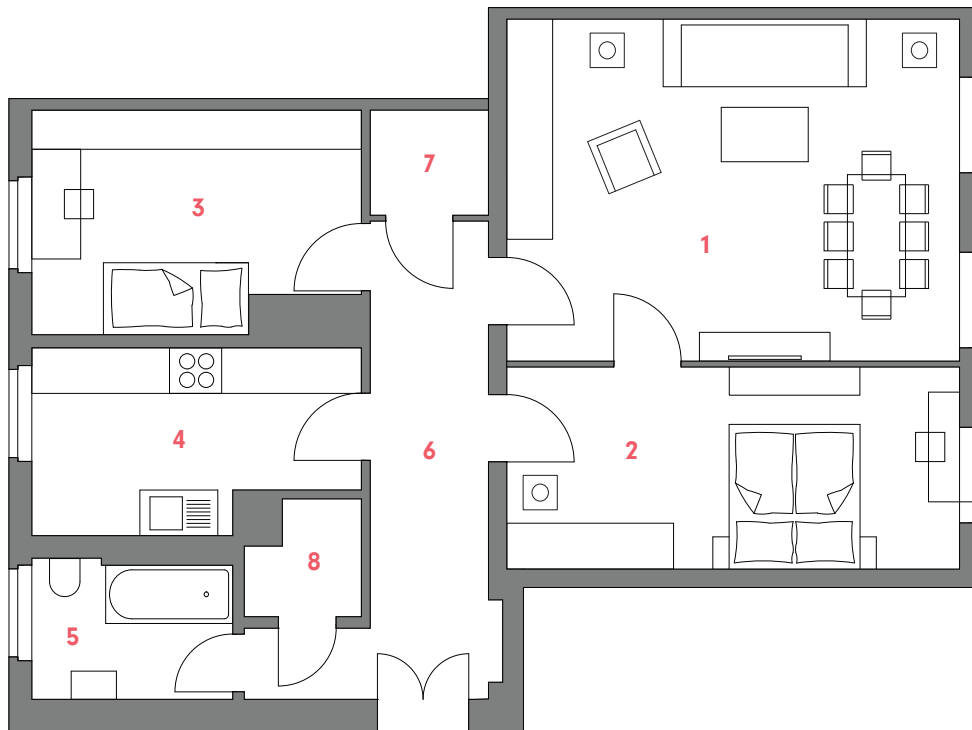
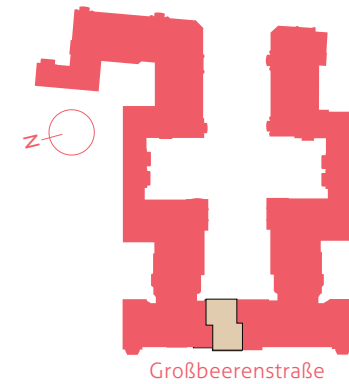


WE 120

**3-Zimmer-Wohnung
im 5.OG**

3-Room-Apartment, 5th Floor

Großbeerenstr. 57, Aufgang Victoria



1	Wohnzimmer / Living room.....	26,74 m ²
2	Schlafzimmer / Bedroom.....	15,81 m ²
3	Kinderzimmer / Children's bedroom.....	12,00 m ²
4	Küche / Kitchen.....	9,68 m ²
5	Bad / Bathroom.....	4,74 m ²
6	Diele / Hall.....	11,51 m ²
7	Abstellraum / Storeroom 1.....	2,15 m ²
8	Abstellraum / Storeroom 2.....	2,08 m ²
GESAMTFLÄCHE.....		84,71 m²
Total living space		